



BATH TOWNSHIP ZONING

Summit County, Ohio

3864 West Bath Road - P.O. Box 1188 - Bath, Ohio - 44210-1188
Phone: 330.666.4007 - Fax: 330.666.0305
www.bathtownship.org

APPEARANCE REVIEW COMMISSION

For office use only:	ARC File No.:	BZA File No.:
Associated permits:		

Applicant Data

Name: Tailane Moore

Company Name: Mann Parsons Gray Architects

Address: 3660 Embassy Parkway, Fairlawn OH 44333

Telephone No.: 330 666 5770 Email: tailane@mpg-architects.com

Property Data

Zoning District: (circle one) R-1 R-2 R-3 R-4 B-1 **B-2** B-3 B-4 B-5

Corner Lot: Yes No Note: Corner lots are required to meet the front setback on both streets.

Property Address: 395 Springside Drive, Bath Township, Akron OH 44333

Allotment Name: 440 552 7357 Parcel No.: _____

Owner(s): Petitti Garden Centers

Owner Address: 25018 Broadway Avenue, Oakwood Village, OH 44146

Telephone No.: 440 552 7357

Type of Review (check all that apply)

- Site Plan
- Building/Elevation
- Sign
- Other (explain): Lighting specs

Required Site Plan Data and Architectural Drawings

The following items must be submitted with the application in order to be reviewed. A digital copy of site plan and plans will be required upon submission. (the application will be reviewed and placed on the agenda for review by the ARC once the application is deemed complete)

- 2 copies of site plan – must show existing structures, proposed structures, all setbacks and lot dimensions, driveway access location, all easements, septic system and well location (if applicable), and any unusual topography (include streams, lakes, ponds, ravines, steep slopes, etc.)
- 2 copies of elevations, signs, landscaping, lighting, parking, etc.
- Digital copy of all required documents (i.e. .pdf file)

Fee – Due at time of application (make check payable to *Bath Township Trustees*)

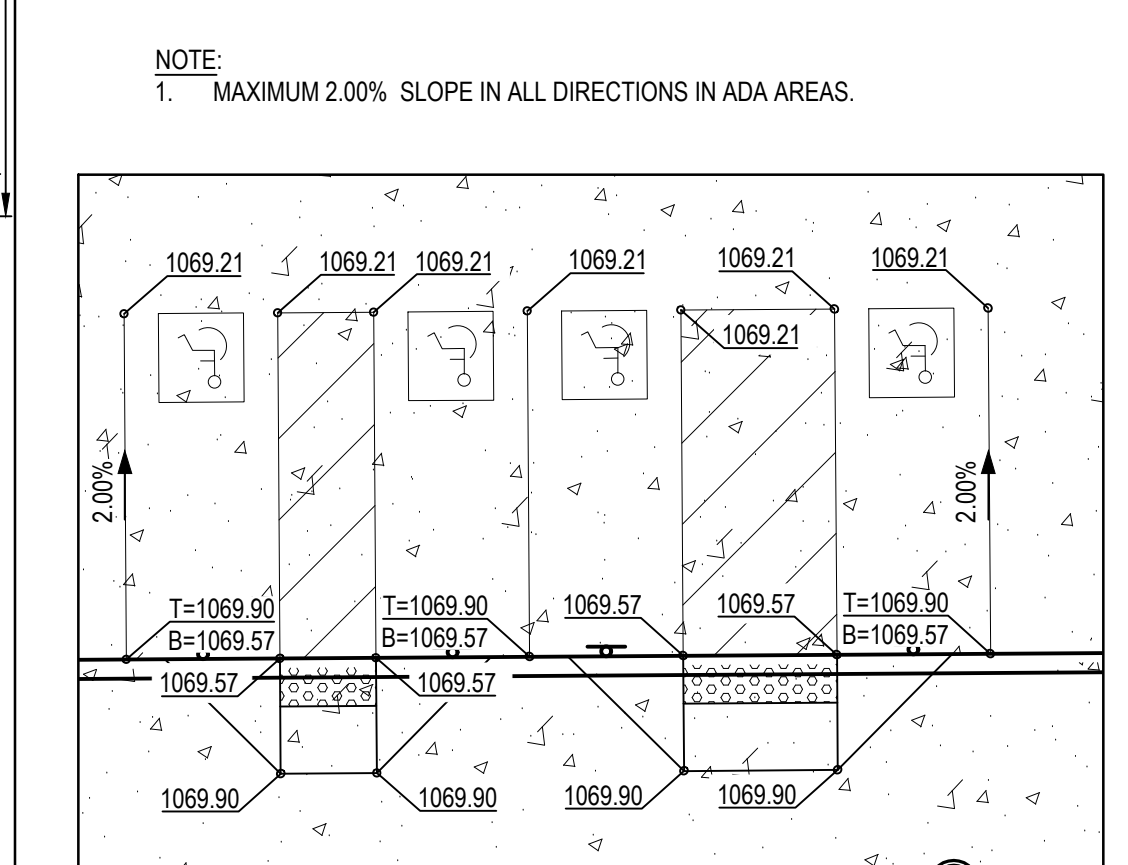
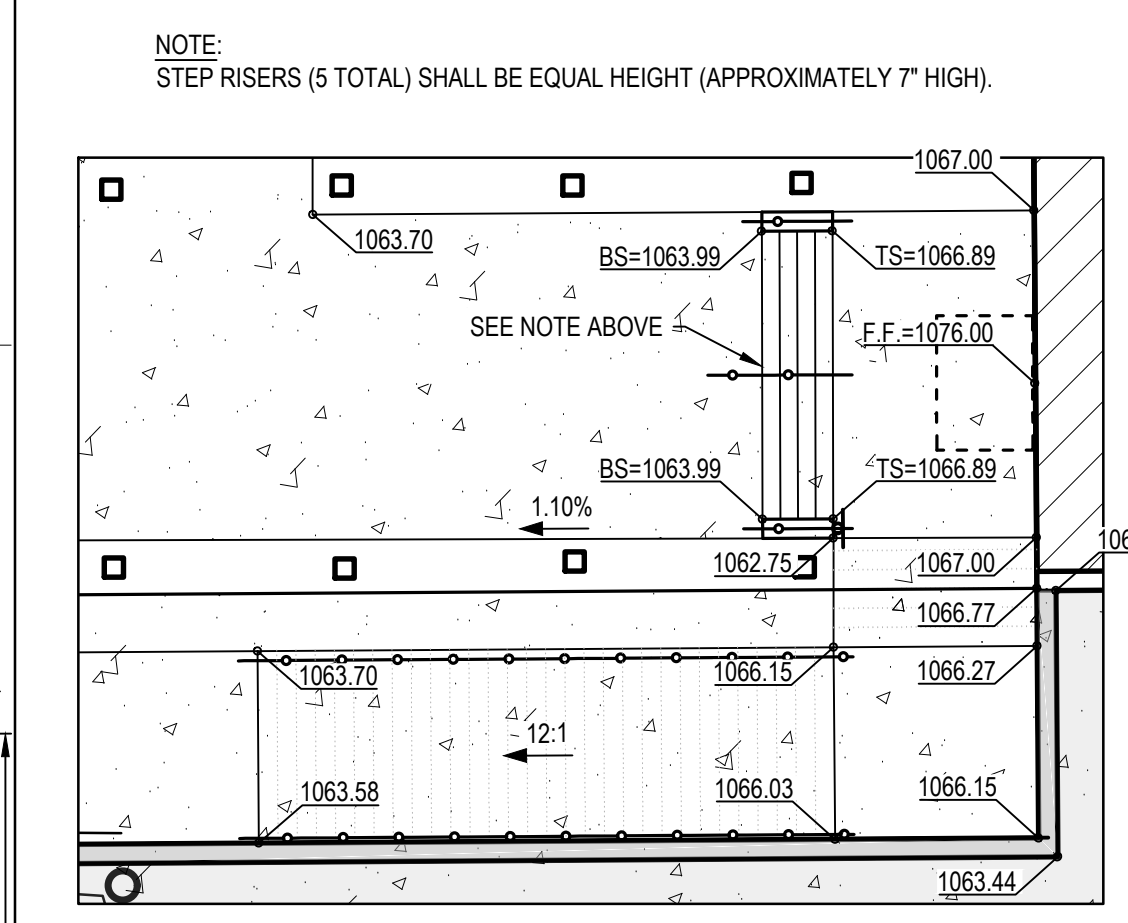
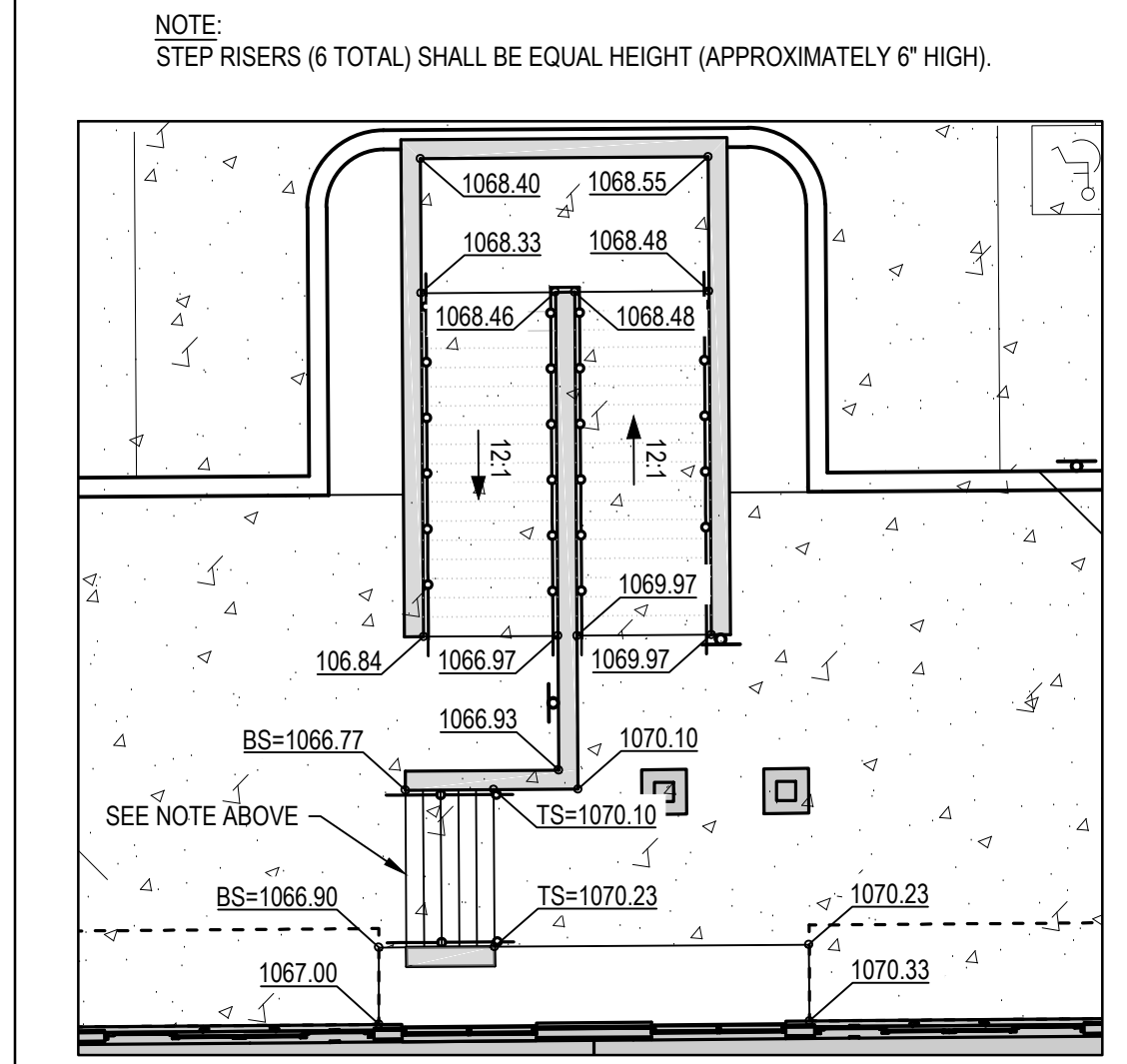
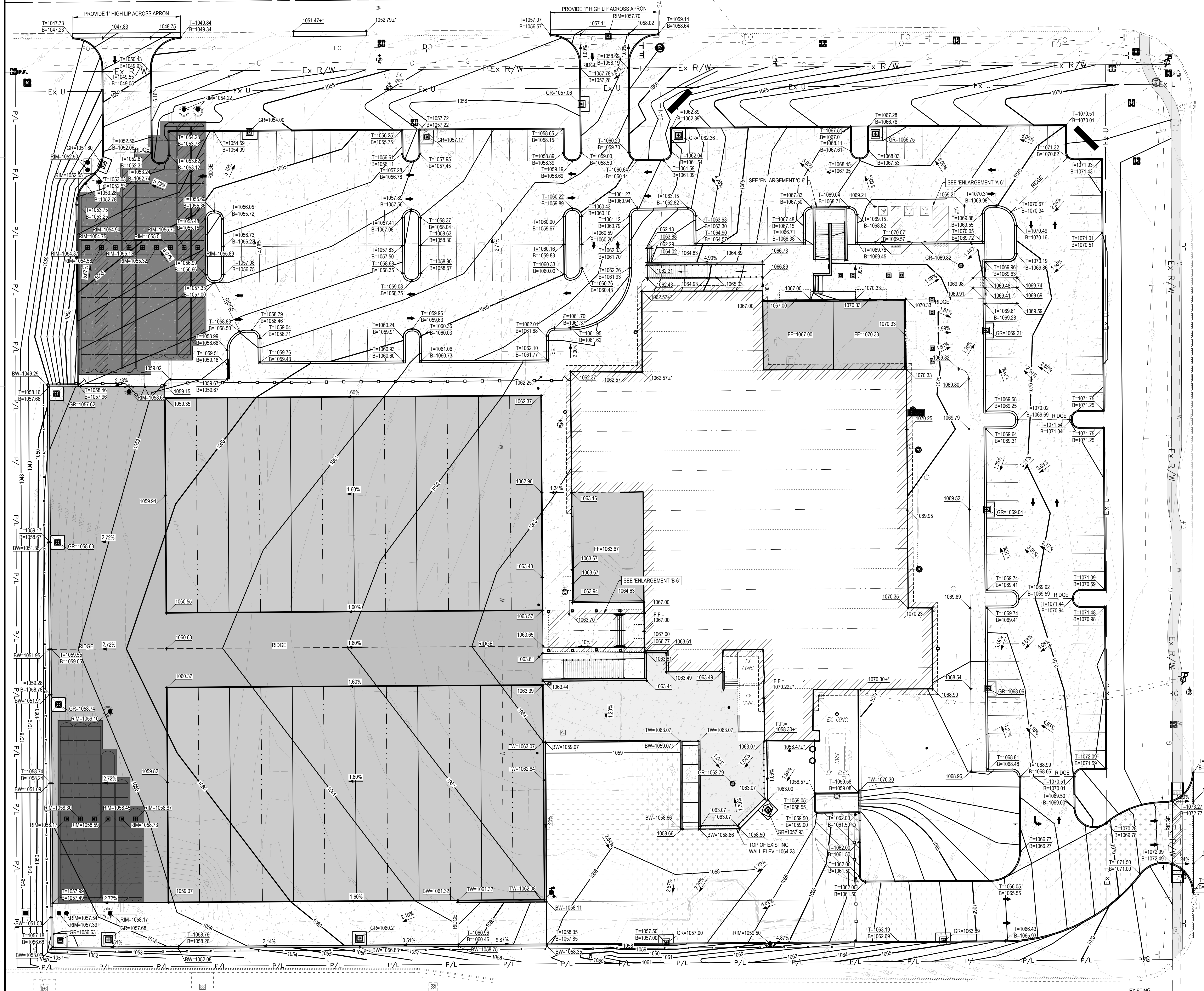
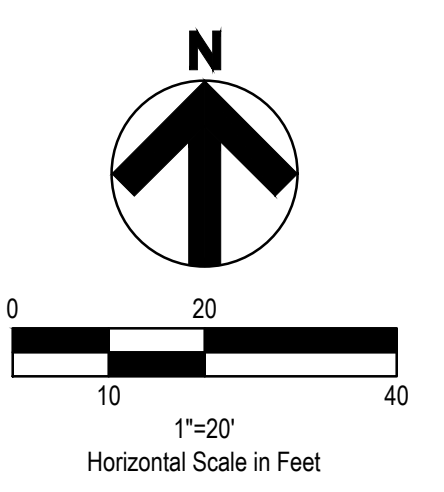
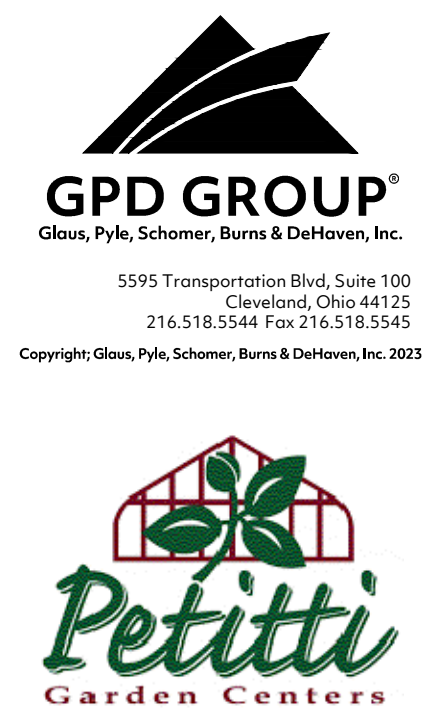
- For Site Plan - \$100.00

Applicant Signature: Date: 12/19/2024

SPRINGSIDE DRIVE

GENERAL SHEET NOTES
1. SEE SHEET C-101 FOR CONTROL DATA.

- LEGEND**
(SEE SHEET C-001 FOR GENERAL LEGEND)
- 000 PROPOSED CONTOUR
 - XXX.XX+ EXISTING ELEVATION
 - XXX.XX- MATCH EXISTING GRADE
 - XXXX.XX PROPOSED ELEVATION
 - @ FINISHED GROUND ELEVATION
 - GR=XXXX.XX PROPOSED GRATE ELEVATION OF BASIN
 - RIM=XXXX.XX PROPOSED RIM ELEVATION OF MANHOLE
 - T=XXXX.XX TOP OF CURB ELEVATION
 - B=XXXX.XX BOTTOM OF CURB / FINISHED PAVEMENT ELEVATION
 - TS=XXXX.XX TOP OF STEP ELEVATION
 - BS=XXXX.XX BOTTOM OF STEP / FINISHED PAVEMENT ELEVATION
 - TW=XXXX.XX TOP OF WALL ELEVATION
 - BW=XXXX.XX BOTTOM OF WALL / FINISHED PAVEMENT ELEVATION
 - 0.0% PROPOSED DRAINAGE SLOPE & DIRECTION
 - [Symbol] PROPOSED STANDARD DUTY CONCRETE, SEE SHEET C-501
 - [Symbol] PROPOSED HEAVY DUTY CONCRETE, SEE SHEET C-501



DESCRIPTION	DATE	REV



PETITTI GARDEN CENTERS
395 SPRINGSIDE DRIVE
AKRON, OHIO 44333

GRADING PLAN

ISSUED FOR:	
PERMIT	05/30/24
BID	#####
CONSTRUCTION	#####
RECORD	#####
PROJECT MANAGER	DESIGNER
JRC	DJH

JOB NO.
2024000.01

C-121

Drawing Name: C:\2024\2024000.01 - Timmons - Office Building Addressing - Working File\00_CAD\CAD Sheets\2024000.01_Plan.dwg
November 5, 2024 10:31 AM - e:\hoback



LANDSCAPING LEGEND

SYMBOL	NAME	SYMBOL	NAME
	SYRINGA RETICULA IVORY SILK		BOXWOOD GREEN VELVET
	ANNUAL FLOWERS		JUNIPER GREY OWL
	JUNIPERS ARBOVITAE		ACER FREEMANII CELEBRATION MAPLE
	THUJA ARBOVITAE		HYDRANGEA
	EUROPEAN HORNBEAM		NEPETA WALKER'S LOW

NOTE:
ALL PLANTS CALLED OUT ON THIS PLAN ARE SUGGESTED SELECTIONS ONLY. LANDSCAPE CONTRACTOR TO VERIFY ALL PLANTS ACCORDING TO EXPOSURE AND OTHER ON SITE CONDITIONS. DESIGNER IS NOT RESPONSIBLE FOR FAILED PLANTINGS.

GENERAL NOTES - LANDSCAPE PLAN

- ALL SINGLE STEM TREES TO HAVE STRAIGHT TRUNK AND SYMMETRICAL CROWNS.
- ALL SINGLE TRUNK SHADE TREES TO HAVE CENTRAL LEADER, TREES WITH FORKED OR IRREGULAR TRUNKS WILL NOT BE ACCEPTED.
- ALL MULTI STEM TREES SHALL BE HEAVILY BRANCHED AND HAVE SYMMETRICAL CROWNS. ONE SIDED TREES OR THOSE WITH THIN OR OPEN CROWNS SHALL NOT BE ACCEPTED.
- ALL EVERGREEN TREES SHALL BE HEAVILY BRANCHED, FULL TO THE GROUND AND SYMMETRICAL IN SHAPE.
- ALL TREE LOCATIONS SHALL BE STAKED BY LANDSCAPE CONTRACTOR AND ARE SUBJECT TO THE APPROVAL OF THE ARCHITECT PRIOR TO INSTALLATION OF THE PLANT MATERIAL.
- IT IS MANDATORY THAT POSITIVE DRAINAGE IS PROVIDED AWAY FROM ALL BUILDINGS.
- ALL PLANTING BEDS SHALL BE MOUNDED TOWARD THE CENTER. ISLANDS TO BE KEYS AT PERIMETER EDGE TO HOLD / MAINTAIN MULCH.
- CONTRACTOR TO VERIFY UTILITY ROUTINGS AND COORDINATE THIS WORK WITH EXISTING UTILITY LOCATIONS. ADJUST PLANT MATERIAL ACCORDINGLY.
- PROVIDE DOUBLE SHREDDED HARDWOOD BARK MULCH 3" DEEP MIN. AT ALL PLANTING BEDS. PROVIDE A MIN. 3" DIAMETER MULCH BED AROUND EACH INDIVIDUAL TREE UNLESS TREES ARE INCORPORATED IN A PLANTING BED. MULCH COLOR TO BE BLACK UNLESS OTHERWISE SPECIFIED BY THE OWNER. CONTRACTOR SHALL SUBMIT MULCH SAMPLES TO OWNER FOR APPROVAL PRIOR TO ORDERING.
- ALL PLANTING BEDS TO RECEIVE A MIN. 6" DEPTH OF SOIL MIX AFTER FINAL GRADE IS ESTABLISHED. SOIL MIX SHALL CONSIST OF 50% SCREENED TOPSOIL, 25% SAND AND 25% LEAF HUMUS. ALL SEEDED AREAS TO RECEIVE A MINIMUM OF 2" OF CLEAN FINE GRADED TOPSOIL, FREE OF ALL ROCKS AND DELETERIOUS DEBRIS.
- CONTRACTOR TO APPLY STARTER FERTILIZER (20-26-6) OR APPROVED SIMILAR FOR ALL LAWN AND PLANT MATERIALS.
- ANY PLANT MATERIAL SUBSTITUTIONS TO BE VERIFIED AND APPROVED BY OWNER OR LANDSCAPE ARCHITECT PRIOR TO INSTALLATION.
- PLACEMENT OF PLANTING MATERIALS SHALL NOT AFFECT THE INTENDED DRAINAGE PATTERN OF THE FINAL GRADING PLAN. THIS INCLUDES BUT IS NOT LIMITED TO PLACING PLANT MATERIALS IN SWALES OR CREATING MOUNDS THAT BLOCK THE INTENDED SURFACE DRAINAGE PATTERN.
- PLANT LISTS ARE PROVIDED FOR REFERENCE ONLY. CONTRACTOR IS RESPONSIBLE FOR PROVIDING ALL PLANT MATERIALS INDICATED ON THE PLANS. AND MAINTAINING FOR A MINIMUM OF 60 DAYS.
- ALL PLANTINGS SHALL RECEIVE A (1) YEAR COMPLETE REPLACEMENT WARRANTY.
- CONTRACTOR SHALL EXTEND IRRIGATION SYSTEM AS NEEDED TO PROVIDE PROPER IRRIGATION TO ALL PLANTING AREAS.
- ALL PLANTS CALLED OUT ON THIS PLAN ARE SUGGESTED SELECTIONS ONLY. LANDSCAPE CONTRACTOR TO VERIFY ALL PLANTS ACCORDING TO EXPOSURE AND OTHER ON SITE CONDITIONS. DESIGNER IS NOT RESPONSIBLE FOR FAILED PLANTINGS.

PRELIMINARY

NOTE!!!
THIS DRAWING IS NOT FOR CONSTRUCTION

DATE PRINTED
DECEMBER 18, 2024

REVISIONS

phone 330.666.5770
3660 Embassy Parkway
Fairlawn, OH 44333

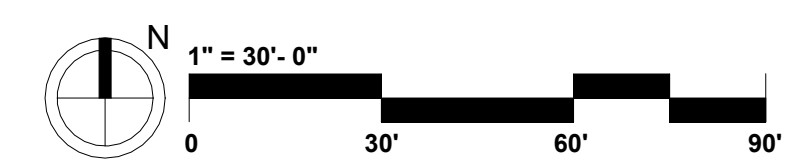
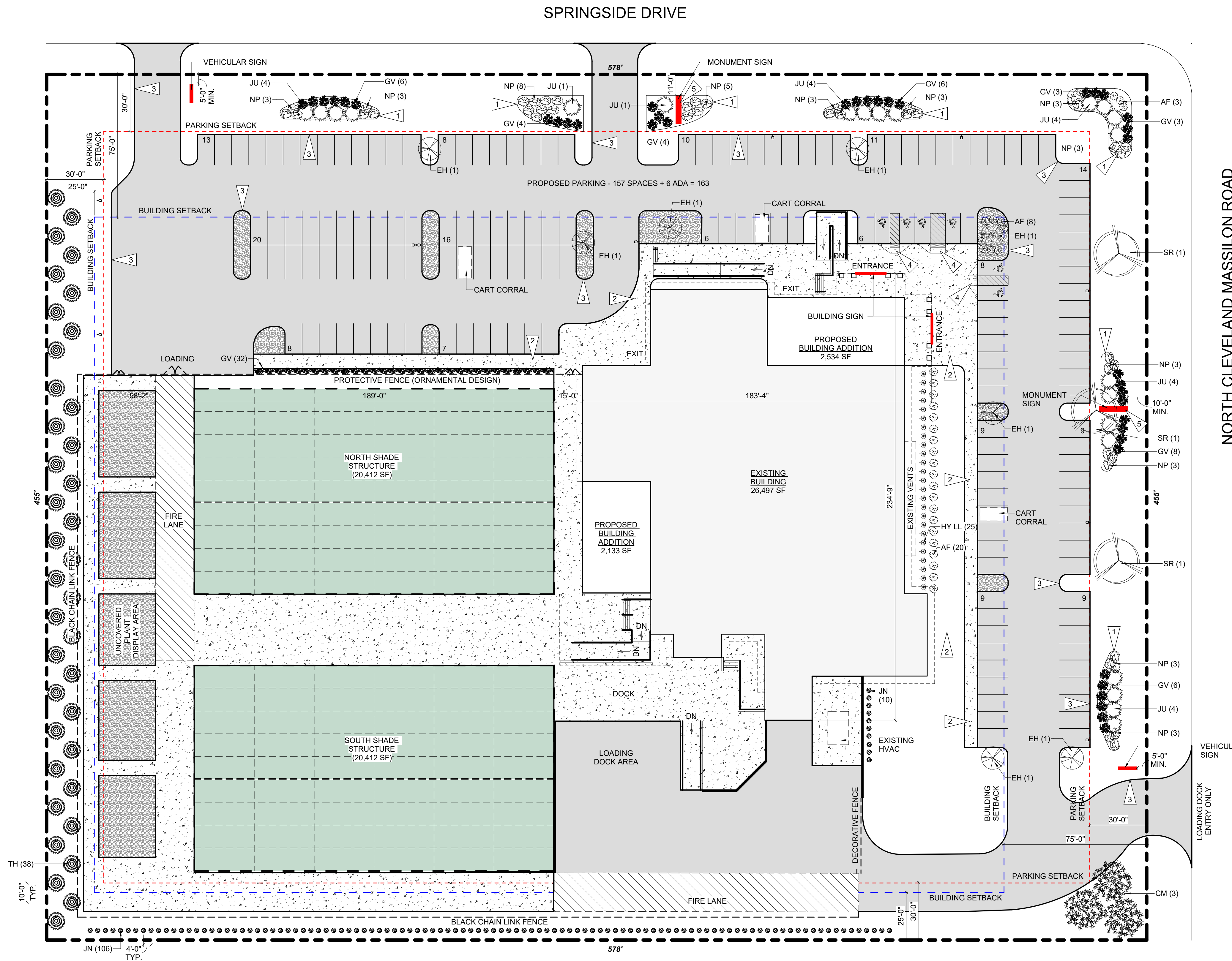
MPG
MANN • PARSONS • GRAY
ARCHITECTS
mpg-architects.com

FLAG NOTES - LANDSCAPE PLAN

- LINES IDENTIFY EXTENT OF LANDSCAPING BEDS. SEE GENERAL NOTES ABOVE FOR MORE INFORMATION.
- NEW CONCRETE SIDEWALK: 4" REINFORCED CONCRETE WITH 6x6 W1.4xW1.4 W.W.F. REINFORCING OVER 4" GRANULAR FILL OVER WELL COMPACTED EARTH. CONTROL JOINTS AT 5'-0" O.C. MAXIMUM. SECTION OF CONCRETE WALK IS TO SLOPE AT A MAXIMUM OF 1:12 UNIFORMLY ACROSS WIDTH OF ENTIRE WALK. PROVIDE DETECTABLE TRUNCATED DOMES PER ANSI 406.13 AND 705. COORDINATE FURTHER WITH CIVIL DRAWINGS.
- NEW CONCRETE CURB, TYPICAL.
- PROVIDE ACCESSIBLE RAMP WITH INTEGRATED DETECTABLE WARNING BUMPS.
- SIGNAGE SUPPLIED AND INSTALLED BY OWNER. SIGNAGE DESIGN TO BE SUBMITTED BY VENDOR UNDER SEPARATE COVER.

BUILDING & SITE INFORMATION

PARCEL NUMBER:	0500484
ZONING DISTRICT:	B-2. COMMUNITY BUSINESS DISTRICT (REZONED FROM PREVIOUS B-3 DISTRICT)
SITE AREA:	
GROSS ACREAGE:	+/- 6.037 ACRES
BUILDING AREA:	
PROPOSED:	31,164 SF
PARKING REQUIREMENTS:	
REQUIRED PARKING SPACES (103.88 = 31,164 SF / 300 SF):	104 STALLS
PROPOSED PARKING SPACES:	163 STALLS
REQUIRED ACCESSIBLE SPACES:	6 STALLS
PROPOSED ACCESSIBLE SPACES:	6 STALLS



PROJECT #: 17123

SITE & LANDSCAPE PLAN
PETITTI GARDEN CENTERS
395 SPRINGSIDE DRIVE
AKRON, OHIO 44333

SK01

BUILDING SIGN INFORMATION

BUILDING SIGN

BUILDING FRONTAGE - NORTH	183'-3"
BUILDING FRONTAGE - EAST	234'-9"
1309-B (2)	
ALLOWABLE SIGN SF - NORTH	183 x 1.5 = 274.5 SF
ALLOWABLE SIGN SF - EAST	234' x 1.5 = 351 SF
MAXIMUM ALLOWABLE BUILDING SIGN SF	40 SF
PROPOSED BUILDING SIGN AREA	102 SF
BUILDING SIGN LIGHTING:	GOOSENECK W/ ANGLED SIGN LIGHT
BUILDING SIGN MATERIALS: 2" THICK HIGH DENSITY URETHANE PAINTED WITH 100% ACRYLIC PAINTS.	
REFER TO LIGHTING SPECS ATTACHED TO SUBMITTAL.	

PRELIMINARY

NOTE!!!
THIS DRAWING IS NOT
FOR CONSTRUCTION

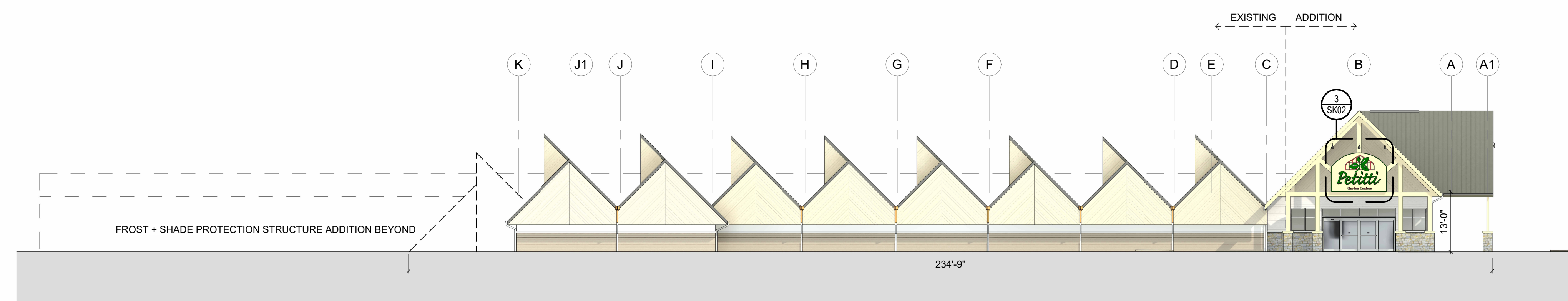
DATE PRINTED

DECEMBER 18, 2024

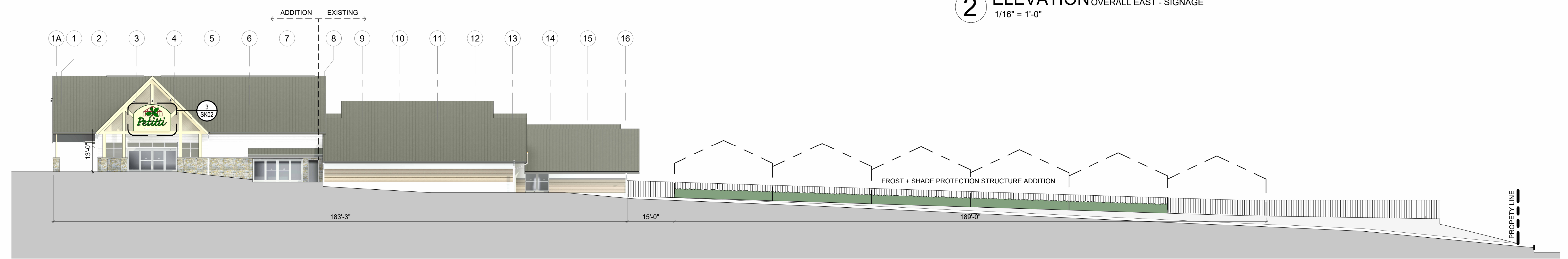
REVISIONS



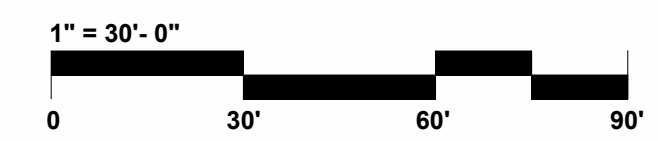
3 DETAIL ENLARGED BUILDING SIGN
3/4" = 1'-0" 102 SF



2 ELEVATION OVERALL EAST - SIGNAGE
1/16" = 1'-0"



1 ELEVATION OVERALL NORTH - SIGNAGE
1/16" = 1'-0"



phone 330.666.5770
3660 Embassy Parkway
Fairlawn, OH 44333
MPG
MANN • PARSONS • GRAY
ARCHITECTS
mpg-architects.com

BUILDING SIGN ELEVATIONS

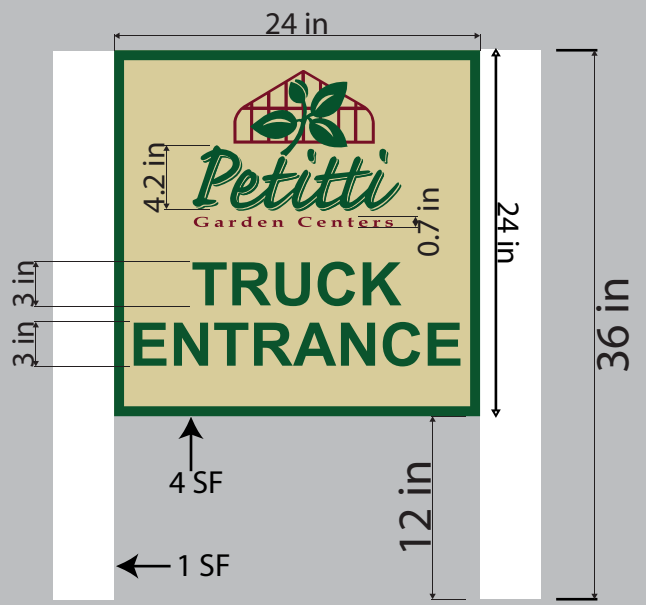
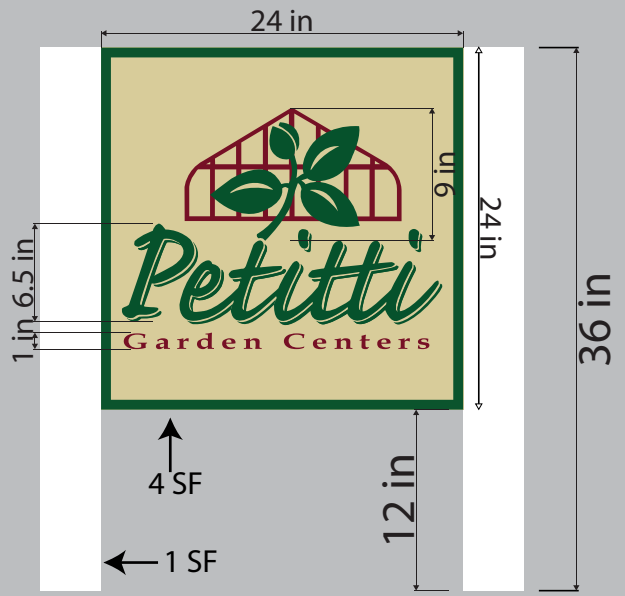
PETITTI GARDEN CENTERS

395 SPRINGSIDE DRIVE
AKRON, OHIO 44333

PROJECT #: 17123

SK02

24" x 24" HDU panels mounted between two 4x4 aluminum posts



Project: Petitti

Project Location: 395 Springside Dr, Bath Township, OH

Client: Greg Drager



212 Warden Ave.
Elyria, OH
44035

These are original designs or concepts and are the property of L3 Sign & Image and may not be shown to any individuals other than the addressee without the written consent of L3 Sign & Image. Should these designs be used in anyway other than as intended by the addressee, design changes will apply.

Client Signature: _____

Date Issued: 11/18/24 | Revision Date: 12/02/24 | Revision #: _____



ANGLED REFLECTOR DAMP / WET LOCATION SIGN LIGHTS

PROJECT: _____
 QUANTITY: _____ TYPE: _____



AR1214GV
CO - Copper Metallic



AR1214GV
PT - Platinum Silver



AR1214GV
MB - Matte Black



AR1214GV
AS - Anodic Sapphire

SERIES	LUMENS ¹	CCT	DRIVER / DIMMING ²	ACCESSORIES ⁵	MOUNTING ⁸	FINISH ¹²	WET KIT
AR0808GV AR1012GV AR1214GV	15L 27L 1500 Lm 2700 Lm	80 CRI 27K 2700K 30K 3000K 35K 3500K 40K 4000K 90 CRI 27HK 2700K 30HK 3000K 35HK 3500K 40HK 4000K	EX Electronic Driver, 120V/277V 1%, 0-10V, 120V/277V DO10X ⁶ ELV/MLV, 120V DS2W1 Lutron® 2-Wire Forward Phase (MLV), 120V DLTE1 ¹ 1%, Lutron® EcoSystem®, Fades to Black, 120V/277V DL3EX ⁴	ENCLOSURES TF1 ⁷ 3" Frosted Dome TG1 ⁷ 3" Dome Wire Guard MF1 3" Frosted Mini MG1 3" Short Wire Guard FJ1 3" Frosted Tall FG1 3" Tall Wire Guard	WALL MOUNT CP104 Small Driver Canopy CP104KO Small Driver Canopy w/ Knockouts CP106 Large Driver Canopy CP6/RMD Remote Mount Driver SP90 ⁹ Straight Arm PA ⁹ Mounting Arm Style PA23 ⁹ Mounting Arm Style CEILING MOUNT RDC5 Small Driver Canopy CP13 Large Driver Canopy HM ¹⁰ Hang Straight AT ¹⁰ Hang Straight All Thread PM ¹⁰ Rigid Pendant Mount EMCR ¹¹ 10W Large Driver Canopy EM EMRM 7W Remote EM EMEN 7W Remote with Enclosure	MW ¹³ Matte White MB ¹³ Matte Black PT ¹³ Platinum Silver CC Custom Color See Page 5 for Full Range of Color Options (83-90083)	WLKA Wet Location Kit

QUICK SHIP

EXAMPLE: AR1012GV27L27KDO10X/TF1/CP106PA23/MW

NOTES:
 1 Nominal Source Lumens at 35K 2 Contact Factory for Additional Options 3 Available with CP106/RDC5/CP13 Only 4 Available with CP106/CP13 Only
 5 Enclosure, Wire Guard Required - Choose One Option 6 Standard Enclosure 7 TG1 Not Available With AR0808GV 8 See Mounting Page for Details on Components and Finishes 9 See Mounting Page for Available Arm Options 10 Specify Length in Inches: See Mounting Page for Available Lengths
 11 EMCR Replaces RDC5 or CP13 12 See Color Page for More Options/Consult Factory for Special Finishes 13 Standard Finishes



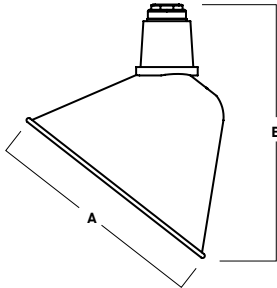


ANGLED REFLECTOR DAMP / WET LOCATION SIGN LIGHTS

LUMENS / WATTAGE DATA				
PART NUMBER	SOURCE LUMENS ¹	DELIVERED LUMENS ²	SYSTEM WATTS	LPW
AR1214GV15L	1500	1050	10	105
AR1214GV27L	2700	1833	18	102

¹ Nominal Source Lumens at 35K ² Nominal Delivered Lumens at 35K

HOUSING DIMENSIONS



Dimensioned with **AR1214GV**

SERIES	A	B
AR0808GV	8.0	9.0
AR1012GV	10.3	11.3
AR1214GV	12.0	13.8

QUICK SHIP

Quick Ship Surface highlights products that can ship in 5 - 10 working days.

APPLICATION

Angled Reflector light is perfect for a variety of sign and surface lighting applications.

FEATURES

Spectrum Lighting's RLM Classics are inspired by vintage lighting fixtures redesigned with modern LED light sources and materials. The wide range of options for illumination, mounting, enclosures, guards and finishes allows for creative fixture specification and design. LED module and driver are serviceable for future replacement. Available in three sizes.

FINISH

Multi-stage polyester powder-coat process applied on our dedicated paint lines. Variety of standard and custom finishes are available. Matte White interior standard.

ELECTRONICS

GV LED system features high brightness white Samsung LED's. 3-step MacAdam Ellipse binning. Standard CRI: 80+. Higher CRI, R9 and custom LED configurations are available; consult factory. Choice of electronic 120V/277V and dimming drivers.

CONSTRUCTION

Fixture shades are spun in our factory from 0.063 high purity aluminum. Wall mount canopies are die-cast aluminum with stainless steel hardware. Wall arms are formed 3/4 NPT aluminum pipe and may be field cut.

CODE COMPLIANCE

BAA compliant. ETL certified to meet US and Canadian standards. Suitable for dry or damp locations. Wet Location Option. Manufactured and tested to UL standards No. 1598/8750.

SERIES SIZES

AR0808GV



AR1012GV



AR1214GV



ENCLOSURES

TF1

3" FROSTED DOME



MF1

3" FROSTED MINI



FJ1

3" FROSTED TALL



TG1

3" FROSTED DOME
WIRE GUARD - FITS TF1



MG1

3" FROSTED MINI
WIRE GUARD - FITS MF1



FG1

3" FROSTED TALL
WIRE GUARD - FITS FJ1

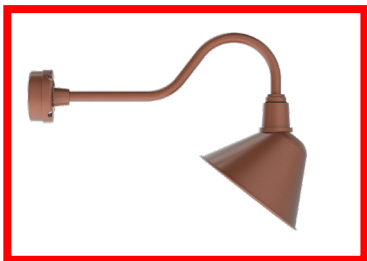


WALL MOUNT

(SEE MOUNTING PAGES FOR MORE OPTIONS & DIMENSIONS.)

PA

MOUNTING ARM STYLE



AR1214GV SHOWN WITH CP104PA23

CEILING MOUNT

(SEE MOUNTING PAGES FOR MORE OPTIONS & CANOPY DIMENSIONS.)

HM / AT / PM

HANG STRAIGHT / ALL THREAD / PENDANT



AR1214GV SHOWN WITH RDC5PM



Spectrum Lighting



ANGLED REFLECTOR DAMP / WET LOCATION SIGN LIGHTS / PHOTOMETRIC DATA

AR1214GV-27L-35K-EX-TF1-MWI

CANDLEPOWER CURVE	INTENSITY	ZONAL LUMENS	SINGLE UNIT: PERFORMANCE INITIAL FOOTCANDLES BASED ON IES BEAM ANGLE				MULTIPLE UNITS: PERFORMANCE 80/50/20% REFLECTANCES INITIAL FOOTCANDLES AND WATTS PER SQUARE FOOT												
			Mounting Height AFF	FC at Center on Floor	Beam Diameter	FC at Beam Edge	Ceiling Height	Fixture Spacing	RCR 2		RCR 4								
	0.00°																		
	0.00°	901	0° - 10°	85	5%	5.50'	30 fc	5.9'	14 fc	8'	8'	21	0.24	16	0.24				
	5.00°	898	0° - 20°	297	16%	6.50'	21 fc	7.0'	10 fc	12'	10''	18	0.20	14	0.20				
	10.00°	877	0° - 30°	557	30%	7.50'	16 fc	8.1'	8 fc	16'	12''	12	0.14	6	0.09				
	15.00°	841	0° - 40°	829	45%	8.50'	12 fc	9.2'	6 fc	Delivered Illuminance Rating: (DIR)		88 FC per W/Sq. Ft.		70 FC per W/Sq. Ft.					
	20.00°	794	0° - 60°	1,315	72%	10.00'	9 fc	10.8'	4 fc	2' Suspension Length Square rooms used for multiple units: - RCR 2: Length & Width = Ceiling Ht. - 4.5' x 5.00 - RCR 4: Length & Width = Ceiling Ht. - 4.5' x 2.50 * Average Footcandles at 2.5' Above Floor ** Exceeds spacing criteria by 106% *** Exceeds spacing criteria by 20% **** Exceeds spacing criteria by -6%									
	30.00°	667	0° - 80°	1,626	89%	12.00'	6 fc	12.9'	3 fc										
	40.00°	426	0° - 90°	1,722	94%	14.00'	5 fc	15.1'	2 fc										
	50.00°	170	Total	1,830	100%	16.00'	4 fc	17.2'	2 fc										
	60.00°	85																	
	70.00°	43																	
	80.00°	18																	
	90.00°	3																	

Delivered Lumens: 1,830
Luminaire Watts: 18
LER: 101.67

CP at 0deg (Nadir): 901
CRI: 85+

Beam Angle: 72.39
Spacing Ratio: 1.11

Lamp Multiplier: 15L x 0.573
CCT Multiplier: 27K x 0.971, 30K x 0.985, 40K x 1.03, 50K x 1.06



Spectrum Lighting

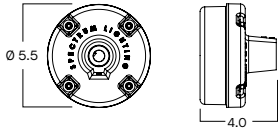
MOUNTING & ACCESSORIES

SOME OPTIONS NOT AVAILABLE ON ALL FIXTURES. CONSULT SPECIFICATION SHEETS. SEE INDIVIDUAL SPECIFICATION SHEETS OR CONSULT FACTORY FOR ADDITIONAL INFORMATION. NOTE: THIS IS TYPICAL OF RLM SPECIFICATION FOR MOUNTING. INDIVIDUAL FIXTURES OR PROJECTS MAY HAVE SPECIALIZED REQUIREMENTS.

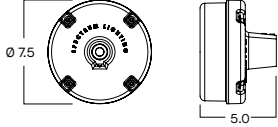


WALL MOUNTING

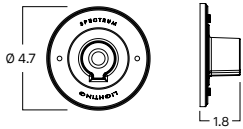
CP104 - SMALL DRIVER CANOPY (STANDARD)
MAY BE USED AS SPLICE BOX FOR DIRECT FEED
NOT AVAILABLE W/ PA16 & PA16F



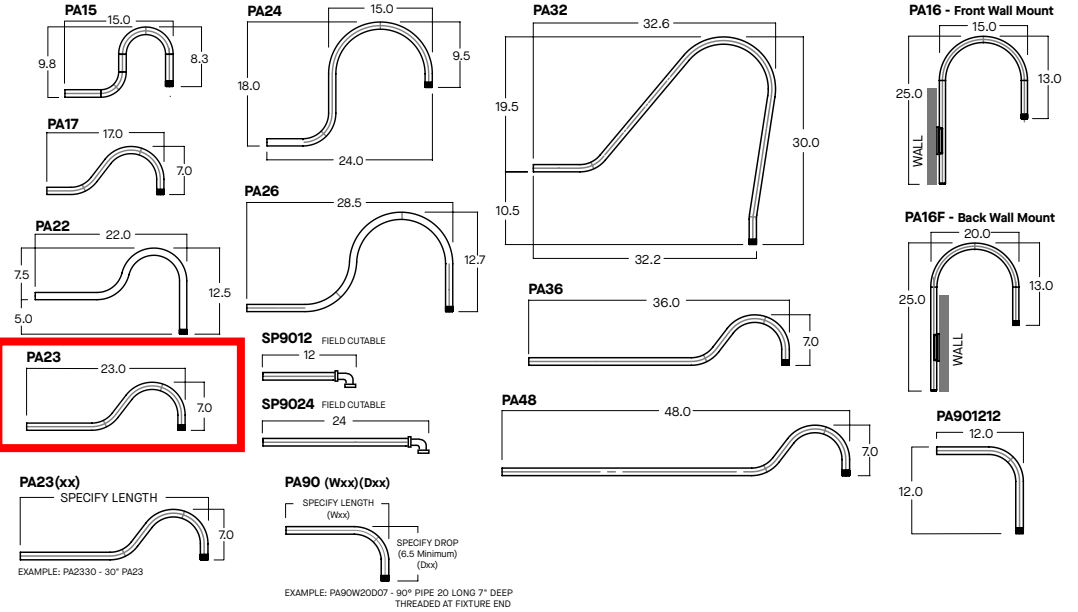
CP106 - LARGE DRIVER CANOPY
MAY BE USED AS SPLICE BOX FOR DIRECT FEED



CP6/RMD - REMOTE MOUNT DRIVER
MOUNTS DIRECTLY TO WALL OR OCTAGON STYLE J-BOX

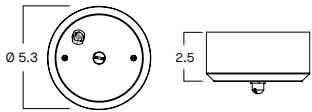


CUSTOM AND OTHER WALL ARMS AVAILABLE - CONTACT FACTORY. ARMS MAY BE FIELD CUT ON WALL SIDE - FIXTURE SIDE THREADED 3/4" NPT REQUIRES SEALANT FOR WET LOCATION.

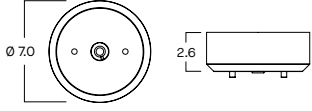


CEILING MOUNTING

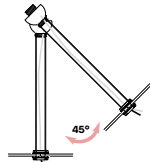
RDC5 - SMALL DRIVER CANOPY (STANDARD)
MOUNTS TO 4" OCTO J-BOX



CP13 - LARGE DRIVER CANOPY

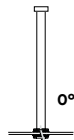


HM*
HANG STRAIGHT
45° SWIVEL 5/8" OD STEM - 3/8" IP



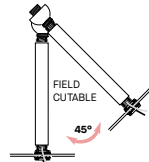
ORDER: HM (Length)
SPECIFY LENGTH:
HM3 - 3" HM24 - 24"
HM6 - 6" HM36 - 36"
HM12 - 12" HM48 - 48"
HM18 - 18" HM72 - 72"
HMLC(XX)
Custom Length
(Specify in Inches)

PM*
RIGID PENDANT MOUNT
RIGID 5/8" OD STEM - 3/8" IP



ORDER: PM (Length)
SPECIFY LENGTH:
PM3 - 3" PM24 - 24"
PM6 - 6" PM36 - 36"
PM12 - 12" PM48 - 48"
PM18 - 18" PM72 - 72"
PMLC(XX)
Custom Length
(Specify in Inches)

AT**
HANG STRAIGHT ALL THREAD
45° SWIVEL 5/8" OD STEM - 1/4" IP



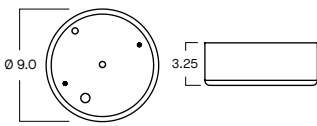
ORDER: AT (Length)
SPECIFY LENGTH:
AT12 - 12"
AT24 - 24"
AT36 - 36"
AT48 - 48"
AT60 - 60"
AT72 - 72"

FIELD CUT INCREASED PIPE TO LENGTH NEEDED. CUT PIPE COVER IS SHORTER THAN THREADED PIPE. SUPPLY COVER OVER THREADED PIPE.

*MAXIMUM ONE PIECE STEM LENGTH IS 72". **MAXIMUM ONE PIECE STEM LENGTH IS 36". LONGER LENGTHS ARE POSSIBLE USING MULTIPLE STEMS AND COUPLERS.
**ORDER IN 12" INCREMENTS, ODD SIZES MAY BE FIELD CUT

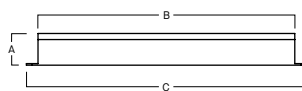
EMERGENCY BATTERY OPTIONS

EMCR - LARGE DRIVER CANOPY FOR 10W EMERGENCY BATTERY



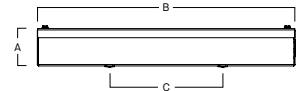
REMOTE EMERGENCY BATTERY OPTIONS

EMRM* - 7W REMOTE EMERGENCY BATTERY (50" MAX)



A	B	C
1.3	12.6	13.0

EMEN* - 7W REMOTE EMERGENCY BATTERY WITH ENCLOSURE (50" MAX)



A	B	C
2.0	17.0	6.2

*OTHER EM BATTERY SIZES AVAILABLE, CONTACT FACTORY.

EMERGENCY BATTERY OPTIONS

COLOR OPTIONS - POWDER COAT PAINT FINISHES

NOTE: NO PRINTED IMAGE CAN EQUAL THE EXACT COLOR OF FINISH ON METAL.
SEE INDIVIDUAL SPECIFICATION SHEETS OR CONSULT FACTORY FOR ADDITIONAL INFORMATION.



STANDARD CORD / STEM / CANOPY FINISHES

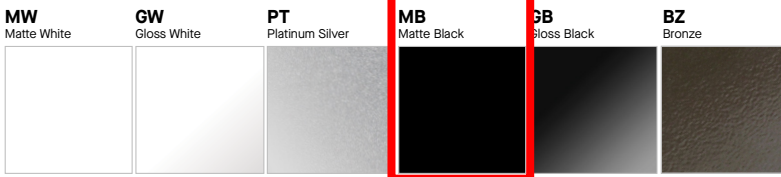
FIXTURE COLOR	STANDARD CORD COLOR	STANDARD CANOPY / STEM COLOR
Matte White, Textured White	Matte White	Matte White
Gloss White	Matte White	Gloss White
Matte Black, Gloss Black, Textured Black	Matte Black	Matte Black
All Others	Matte Black	Same Color as Fixture
Custom Color	Contact Factory	Contact Factory

PAINT TIMES

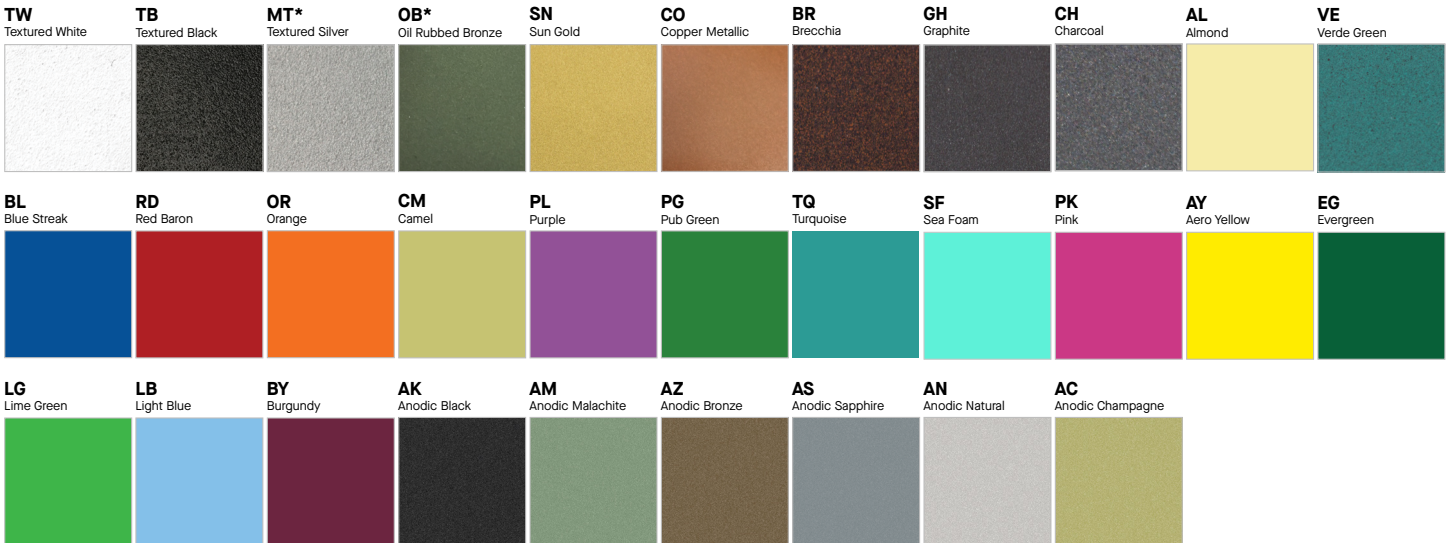
TIER	COST	AVERAGE PAINT TIME*
Tier 1 - Standard Finishes	\$	⓪
Tier 2 - Typical Finishes	\$\$	⓪⓪
Tier 3 - Special Metal Finishes	\$\$\$	⓪⓪⓪
Custom Color	Contact Factory	Contact Factory

*CONTACT FACTORY FOR SPECIFIC PRODUCT LEAD TIMES

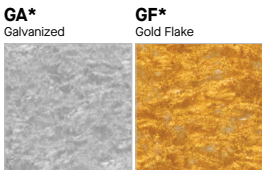
TIER 1 - STANDARD FINISHES



TIER 2 - TYPICAL FINISHES



TIER 3 - SPECIAL METAL FINISHES



CUSTOM COLOR FINISHES

CONTACT FACTORY

CC
Custom Color



*UNAVAILABLE FOR WET LOCATION



DATE: _____ LOCATION: _____
 TYPE: _____ PROJECT: _____
 CATALOG #: _____

LIGHTSCAPER®

LSP-LSCS SERIES - FLOODLIGHT

FEATURES

- Architectural Form Factor perfect for illuminating signage, building façade or landscapes
- Field Selectable CCT (3K, 4K, 5K) and Lumens (1000lm, 2000lm)
- Wide 7x6 distribution
- Standard Knuckle Mount
- 120-277 Volt
- Standard Bronze Finish
- Low Wattage, Low Lumen Flood



tradeSELECT®



SPECIFICATIONS

CONSTRUCTION

- Rugged die-cast aluminum housing
- Tempered Glass lens
- Lumen and CCT switches are accessible without removing any hardware, making it easy to adjust the product even after installation
- Dark bronze matte texture powder coat paint finish provides durable and lasting appearance

OPTICS

- CCT Selectable-3K, 4K, 5K
- Wide lens covers set back distance with uniform light
- 1000/2000 Lumens
- Efficacy up to 128 LPW

INSTALLATION

- Knuckle mount: Universal ½" 14 NPS swivel knuckle has serrated teeth for sure aiming

ELECTRICAL

- 0-10 Volt Dimming Driver
- Lumen and CCT Switchable
- Universal voltage driver is 120-277 Volt
- Ambient Operating Temperature -40°C to 40°C
- 3 kV Surge

CERTIFICATIONS

- DLC® (DesignLights Consortium) Qualified. Please refer to the DLC (DLC) premium qualifications, consult DLC website for more details: <http://www.designlights.org/QPL>
- Listed to UL1598 for use in wet locations
- IP66
- FCC Title 47 Part 15

WARRANTY

- 5 year warranty

ORDERING GUIDE

STOCK ORDERING INFORMATION

Catalog Number	Mounting	CRI	CCT	Lumens	Distribution	Wattage	Voltage	LPW	Finish
LSP-LSCS	Knuckle	70	3000K/4000K/ 5000K	984-2009	Wide	8-16	120-277V	116-128	Bronze

KEY DATA	
Lumen Range	984–2009
Wattage Range	8–16
Efficacy Range (LPW)	116–128
Fixture Projected Life (Hours)	>60K
Weights lbs. (kg)	3.42 (1.55)

LIGHTSCAPER

LSP-LSCS SERIES - FLOODLIGHT

DATE: _____ LOCATION: _____

TYPE: _____ PROJECT: _____

CATALOG #: _____

PERFORMANCE DATA

Description	Nominal Wattage	Dist. Type	Field Angle H x V	5K (5000K NOMINAL 70 CRI)			4K (4000K NOMINAL 70 CRI)			3K (3000K NOMINAL 70 CRI)		
				Lumens	LPW	Max Beam Candlepower	Lumens	LPW	Max Beam Candlepower	Lumens	LPW	Max Beam Candlepower
LSP-LSCS	8	7 X 6	146 x 122	1025	126	541	1015	128	547	984	122	540
	16	7 X 6	146 x 122	2009	120	1050	1991	125	1081	1906	116	1044

ELECTRICAL DATA

Nominal Wattage	Input Voltage	Oper. Current (Amps)	System Power (Watts)
LSPS	120	0.07	8.1
	208	0.04	
	240	0.03	
	277	0.03	
	120	0.14	16.5
	208	0.08	
	240	0.07	
	277	0.06	

PROJECTED LUMEN MAINTENANCE

Ambient Temperature	OPERATING HOURS					
	0	25,000	TM-21-11 36,000	50,000	100,000	L70 (Hours)
25°C / 77°F	1.00	0.94	0.92	0.89	0.79	152,000
40°C / 104°F	0.99	0.93	0.91	0.88	0.78	149,000

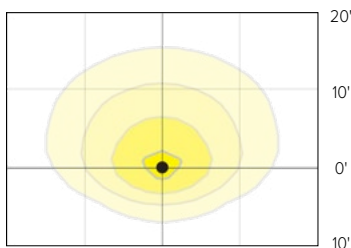
LUMINAIRE AMBIENT TEMPERATURE FACTOR (LATF)

Ambient Temperature		Lumen Multiplier
30°C	86°F	0.99
10°C	50°F	1.01
20°C	68°F	1.00
25°C	77°F	1.00
30°C	86°F	0.99
40°C	104°F	0.98
30°C	86°F	0.99

Use these factors to determine relative lumen output for average ambient temperatures from 0-40°C (32-104°F).

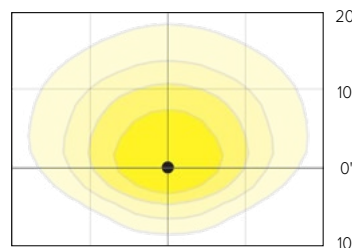
PHOTOMETRY

LSP-LSCS-4K-1000



Mounting Distance: 15'
Tilt Angle: 20°

LSP-LSCS-4K-2000

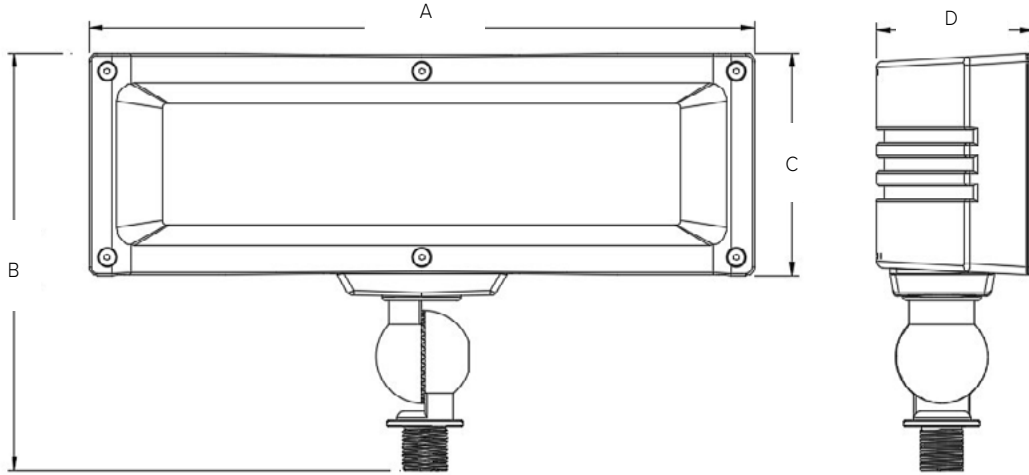


Mounting Distance: 15'
Tilt Angle: 20°

LIGHTSCAPER

LSP-LSCS SERIES - FLOODLIGHT

DIMENSIONS



A	B	C	D	Weight
12" (304.69mm)	7.5" (190.85mm)	4" (101.49mm)	2.83" (71.88mm)	4.42lbs (1.55kg)



Color temperature and lumen switches are controlled by rocker switches located on the exterior of the product so no tools are needed to utilize these features.

USE OF TRADEMARKS AND TRADE NAMES

All product and company names, logos and product identifies are trademarks™ or registered trademarks® of Current or their respective owners. Use of them does not necessarily imply any affiliation with or endorsement by such respective owners.